

PART OF THE NE.1/4, OF SECTION 20, T.6N., R.1W., S.L.B. & M.

295

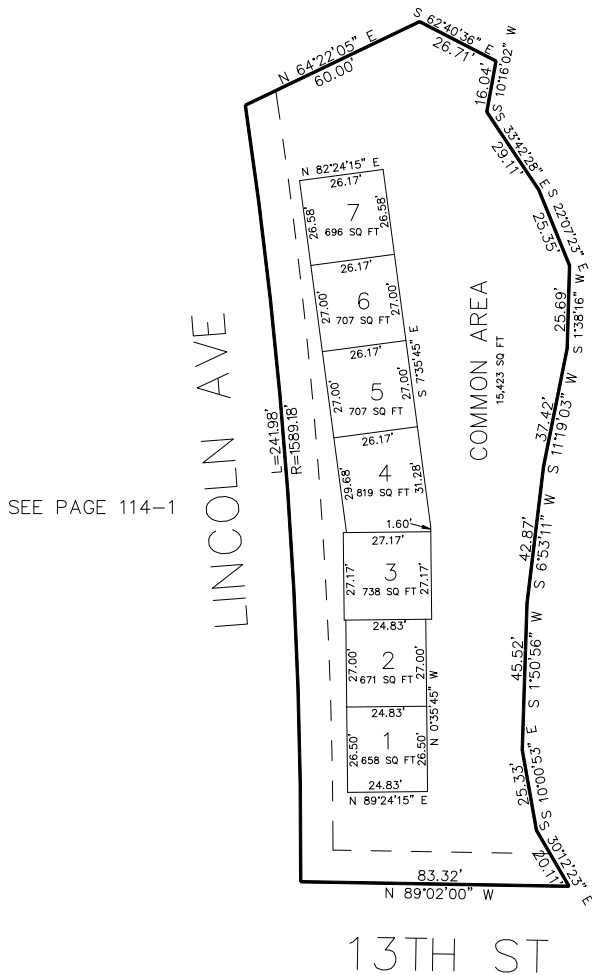
LINCOLN TOWNHOMES SUBDIVISION

IN OGDEN CITY

TAXING UNIT: 25

SCALE 1" = 30'

SEE PAGE 114-1



SEE PAGE 114-1

LOT	SERIAL #	OWNERSHIP
1	122950001	JOSEPH HEINES & WF COLLEEN
2	122950002	STARFIRM LLC
3	122950003	HANNAH BRADY & HUSB BRAXTON
4	122950004	RAMONA BUCIUTA
5	122950005	1264 LINCOLN LLC
6	122950006	SUSAN YOUNG & SABAA ALI
7	122950007	LONDON L CHANTRY & WF MONIQUE F
C.A.	122950008	LINCOLN HOMEOWNERS ASSOC

10' UTILITY & DRAINAGE EASEMENTS EACH
SIDE OF PROPERTY LINES AS INDICATED
BY DASHED LINES EXCEPT AS OTHERWISE
SHOWN.

SEE PAGE 114-1

FOR COMPLETE SURVEY DATA SEE
ORIGINAL DEDICATION PLAT IN
BOOK 95, PAGE 62 OF RECORDS.